

# COLUMBIA SQUARE

---

History meets new Hollywood



KILROY



# Hollywood's First Media Campus

**COLUMBIA SQUARE IS A  
BEAUTIFULLY-RESTORED  
MODERN INTERPRETATION OF  
A STUDIO LOT.** The historically-  
significant mixed-use campus  
encompasses a full city block in  
the heart of Hollywood.

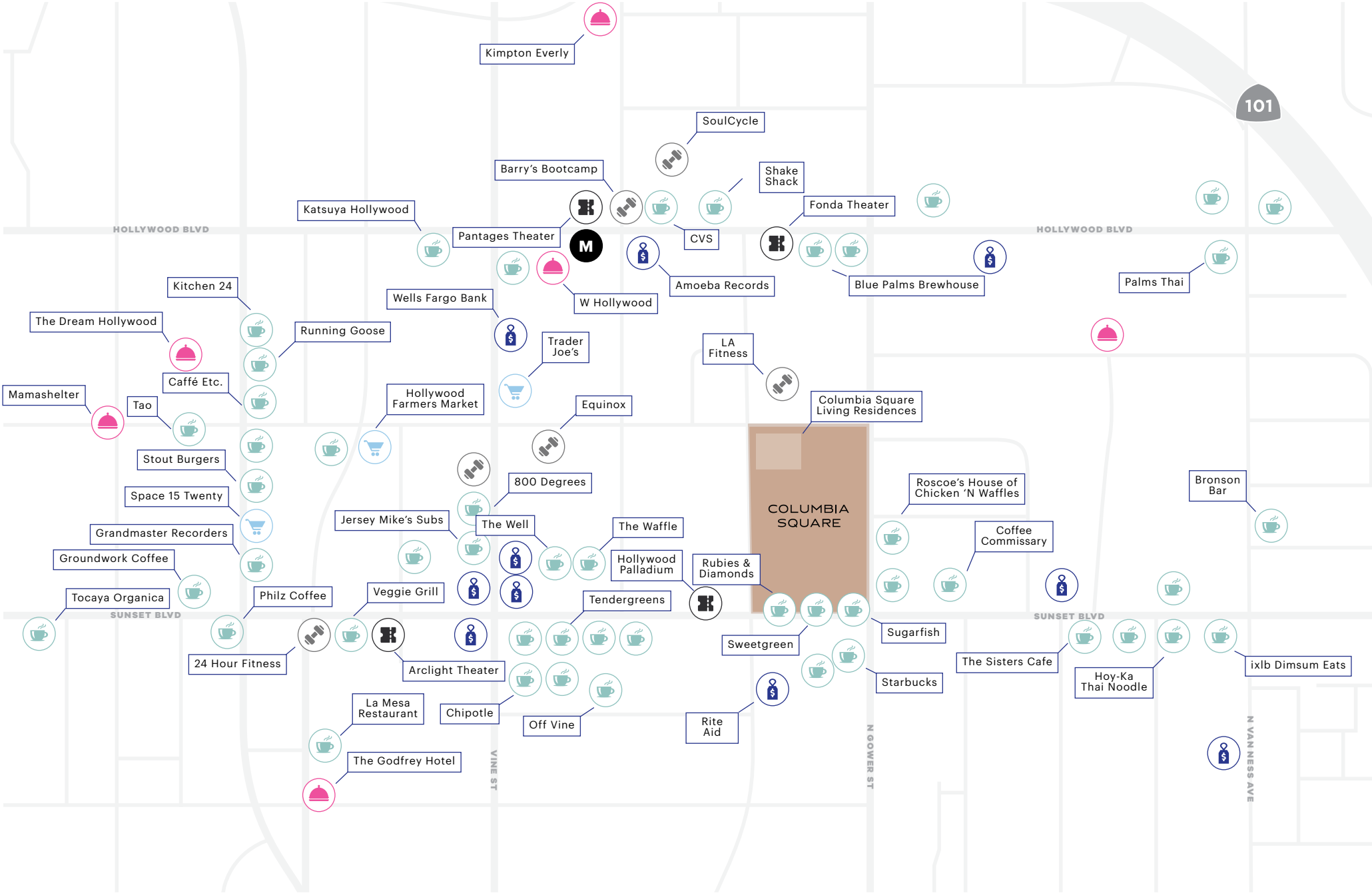




# Central Hollywood Location

**CONVENIENTLY LOCATED.**

A short walk from the best that Hollywood has to offer, Columbia Square is an opportunity to create an urban workplace at a signature address.



## Area Amenities

- Restaurant
- Retail Center
- Retail Service
- Hotel
- Metro
- Athletic Facility
- Theater

# Campus Overview

## COLUMBIA SQUARE CAMPUS

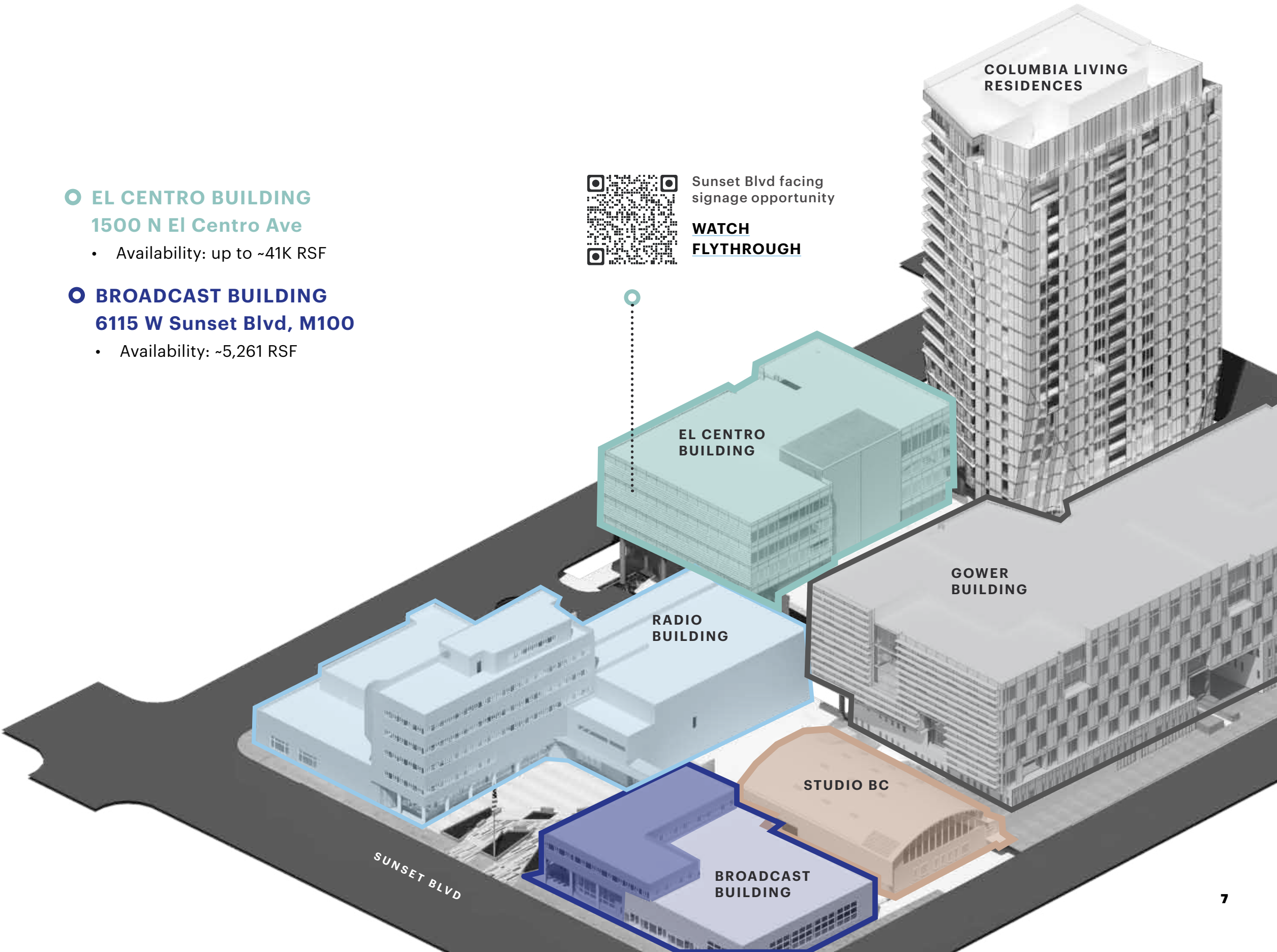
- Total project size: ~507,143 RSF
- Number of buildings: 6
- Residential # of units: 200
- Year completed: 2016
- Parking ratio: 2.75/1,000 RSF

- **EL CENTRO BUILDING**  
1500 N El Centro Ave
  - Availability: up to ~41K RSF
- **BROADCAST BUILDING**  
6115 W Sunset Blvd, M100
  - Availability: ~5,261 RSF



Sunset Blvd facing signage opportunity

**WATCH FLYTHROUGH**





# Campus Experience

---

- Outdoor gathering areas
- Indoor and outdoor event space
- Notable tenants include Paramount Global, Fender, NeueHouse
- On-site amenities include restaurant and food options such as Sugarfish, Sweetgreen, and Rubies+Diamonds
- 24-hour security including 60 surveillance cameras
- Secure subterranean parking with valet

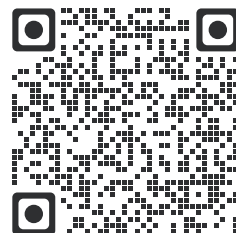




# El Centro Building

- RBA: ~113,447 RSF
- Number of floors: 6
- Average floor plate: ~18K RSF
- Year completed: 2016
- Variable refrigerant flow (VRF) HVAC system
- 13' to 16' slab-to-slab ceiling height
- 3 elevators including 1 freight elevator
- Loading dock
- Direct access to suite from secured garage

**EXPLORE THE HYPOTHETICAL CREATIVE  
WORKSPACE BUILDOUT**

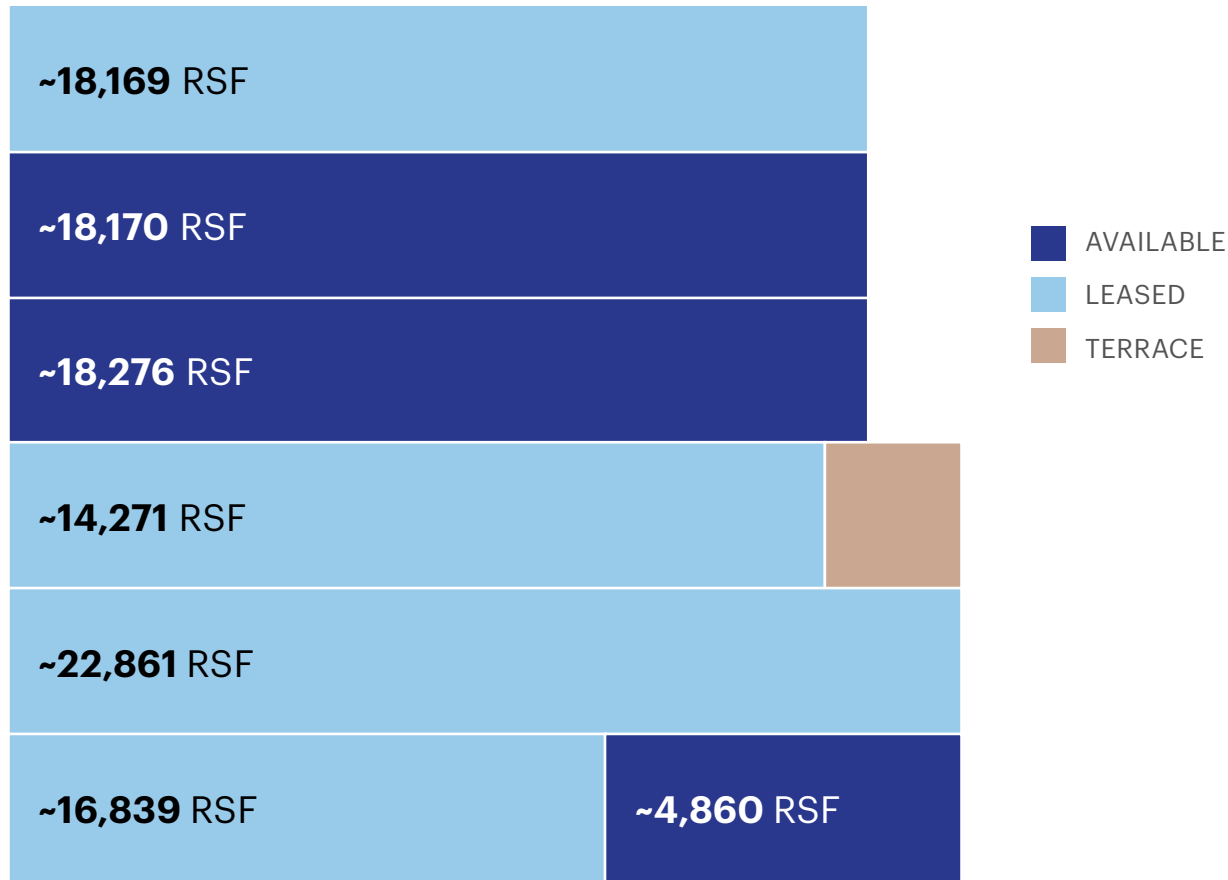




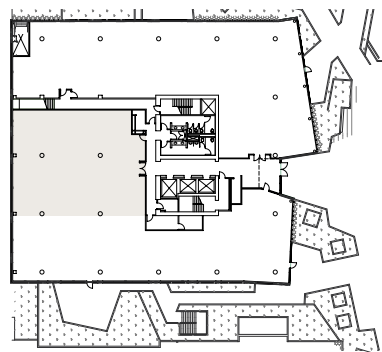


# El Centro Available Space

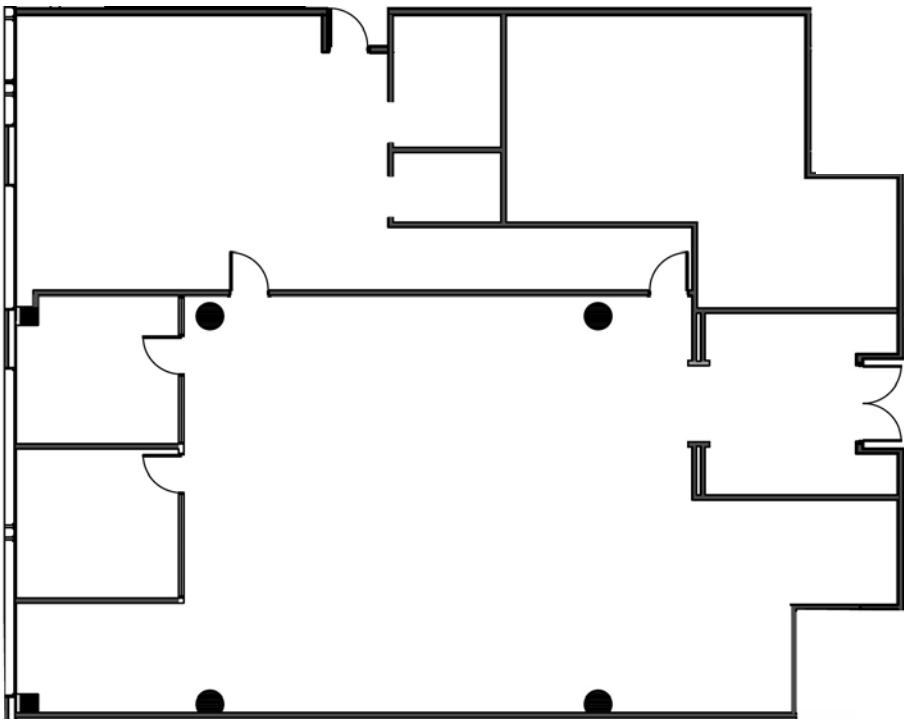
UP TO ~41K RSF OF AVAILABLE SPACE



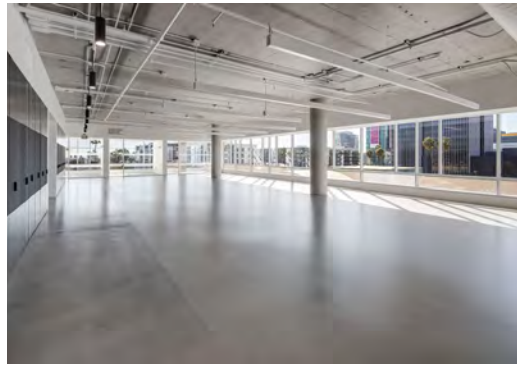
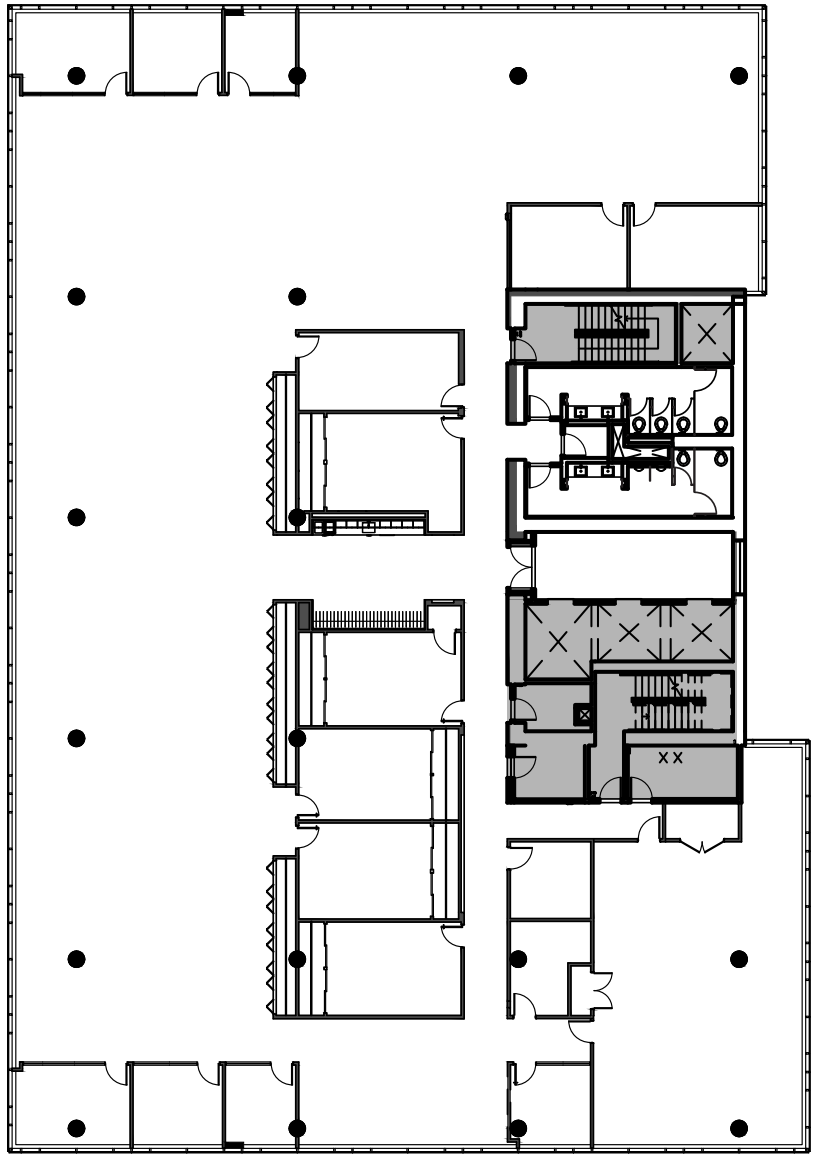
**EL CENTRO, SUITE 120**  
~4,860 RSF Available



SUNSET BLVD

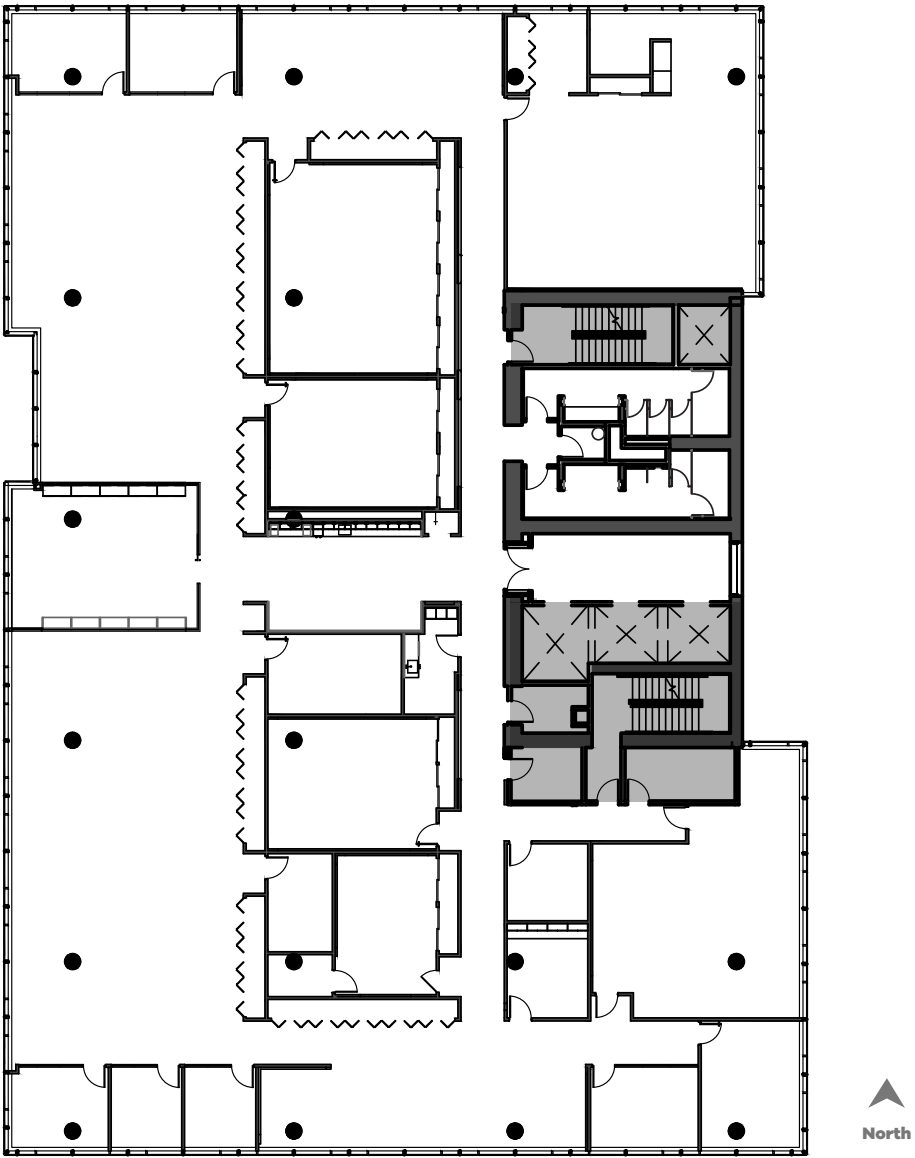


**EL CENTRO, FOURTH FLOOR**  
~18,276 RSF Available

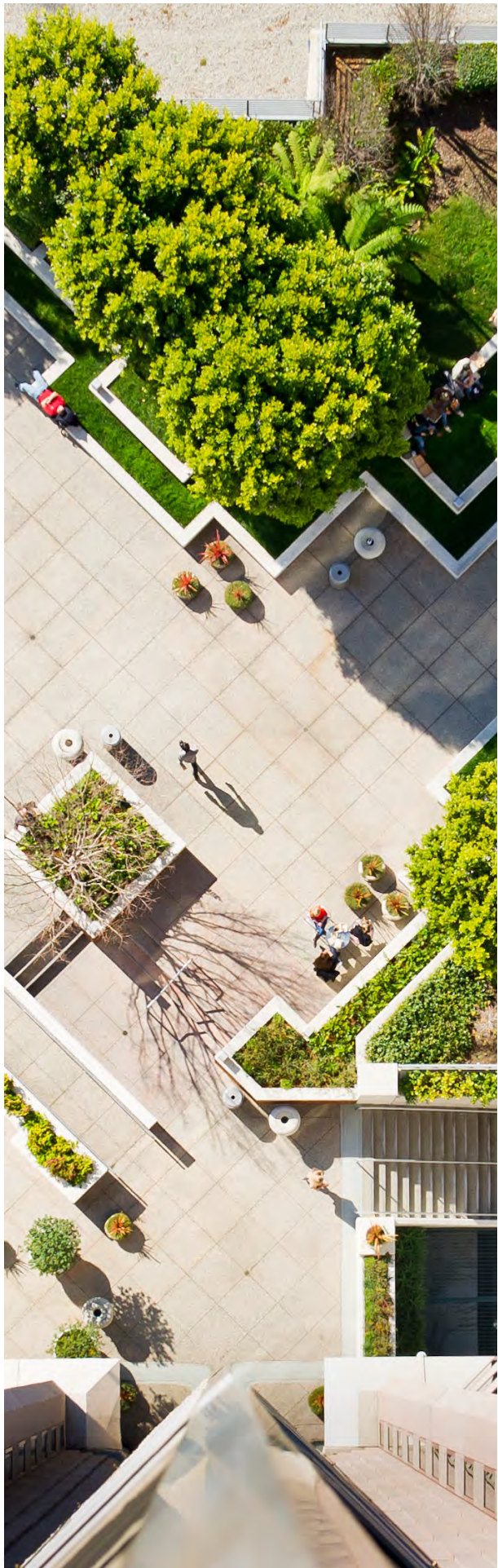




EL CENTRO, FIFTH FLOOR  
~18,170 RSF Available







# About Kilroy

Kilroy Realty is a place where innovation works.

We have made it our mission to provide creative work environments that spark inspiration and productivity for the country’s very best thinkers and doers. We are building and managing 24.2 million square feet of innovative, sustainable properties across the Pacific Northwest, San Francisco Bay Area, Greater Los Angeles, and Greater San Diego; spaces that redefine life for the better.

KILROYREALTY.COM

**78% LEED**  
Certified  
Portfolio

**ENERGY STAR**  
Partner of the Year,  
2014-2022

**#1 GRESB**  
Global Developer,  
2020  
North American  
Office Leader,  
2014-2021  
Green Star,  
2013-2020

**NAREIT**  
Leader in the Light,  
Office Sector, 2014-2021

**NEWSWEEK**  
America's Most Responsible  
Companies, 2020-2022

**100% LEED**  
Gold or Platinum  
Developments

**ENERGY STAR**  
Sustained Excellence,  
2016-2022

**CLIMATE REGISTRY**  
Climate Leadership  
Award, 2020

**NAIOP Developer**  
of the Year, 2020

**BEST IN**  
BUILDING HEALTH  
2019-2022

**ACHIEVED CARBON**  
NEUTRAL OPERATIONS  
Since 2020

**DOW JONES**  
SUSTAINABILITY  
WORLD INDEX  
Member, 2017-2021

**GREEN LEASE**  
Leader Award,  
2014-2021  
Gold Level,  
2018-2021

**BLOOMBERG**  
EQUALITY INDEX  
Member, 2020-2022









## LEASING CONTACTS

---

**CARL MUHLSTEIN**

license #00595250

+1 213 239 6055

carl.muhlstein@jll.com

**PETER HAJIMIHALIS**

license #01994663

+1 213 239 6399

peter.hajimihalis@jll.com

**HAYLEY BLOCKLEY**

lic. 01781682

+1 213 239 6054

hayley.blockley@jll.com

JONES LANG LASALLE BROKERAGE, INC. LICENSE #01856260.  
515 SOUTH FLOWER STREET, SUITE 1300, LOS ANGELES, CA 90071

COPYRIGHT © JONES LANG LASALLE IP, INC. 2023 ALL RIGHTS  
RESERVED. ALL INFORMATION CONTAINED HEREIN IS FROM  
SOURCES DEEMED RELIABLE; HOWEVER, NO REPRESENTATION OR  
WARRANTY IS MADE TO THE ACCURACY THEREOF.



WHERE INNOVATION WORKS